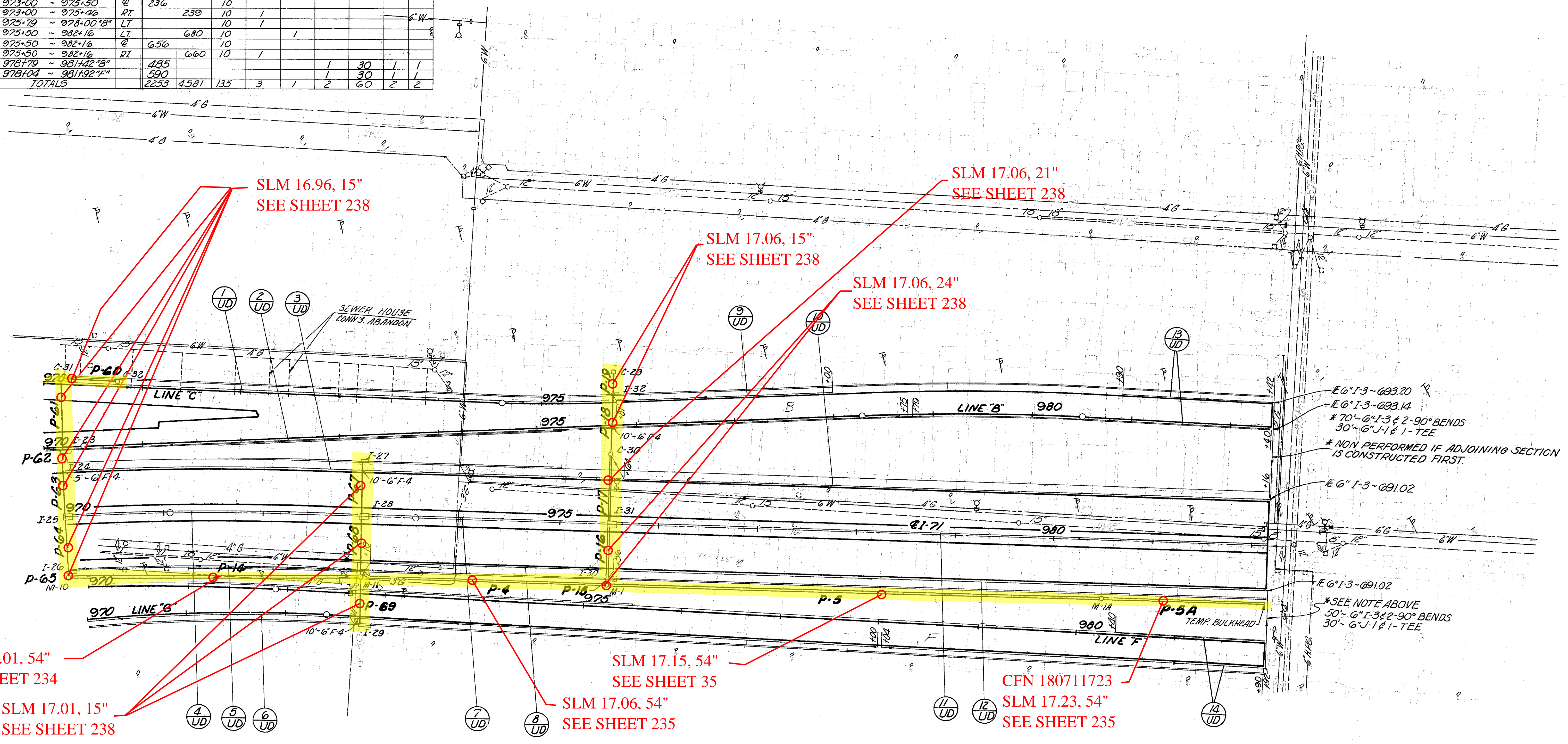


CUYAHOGA COUNTY

CUY-71-15.06

ESTIMATED QUANTITIES												
REF NO	STATION TO STATION	SIDE	I-1			I-5			I-1		I-5	
			CL I-3			CL I-3			CL I-1		CL I-1	
			AS PER PLAN						60°		90°	
			SHALLOW DEEP			BEND			WYE		BEND	
			6"	6"	6"	6"	6"	6"	6"	6"	6"	6"
			LIN FT	LIN FT	LIN FT	EA.	EA.	EA.	LIN FT	EA.	EA.	
1UD	970+00 ~ 978+75.6"	LT		554	20							
2UD	970+19 ~ 982+40.8"	RT		836	20							
3UD	970+00 ~ 975+46	LT		526	15							
4UD	970+00 ~ 972+96	Q	286		10							
5UD	970+00 ~ 972+96	RT		296								
6UD	970+00 ~ 978+00.4"	RT		790	10							
7UD	973+00 ~ 975+50	Q	236		10							
8UD	973+00 ~ 975+46	RT		239	10	1						
9UD	975+79 ~ 978+00.8"	LT			10	1					6" W	
10UD	975+50 ~ 982+16	LT		680	10		1					
11UD	975+50 ~ 982+16	Q	656		10							
12UD	975+50 ~ 982+16	RT		660	10	1						
13UD	978+79 ~ 981+42.8"		485					1	30	1	1	
14UD	978+04 ~ 981+92.4"		590					1	30	1	1	
	TOTALS		2253	4581	135	3	1	2	60	2	2	



EG I-3-693.20

EG I-3-693.14

* 70'-6" I-3 & 2-90° BENDS

30'-6" J-1 & 1-TEE

* NON PERFORMED IF ADJOINING SECTION IS CONSTRUCTED FIRST.

EG I-3-691.02

EG I-3-691.02

* SEE NOTE ABOVE

50'-6" I-3 & 2-90° BENDS

30'-6" J-1 & 1-TEE

FOR PIPE PROFILES & QUANTITIES

SEE SHEETS 206 - 217